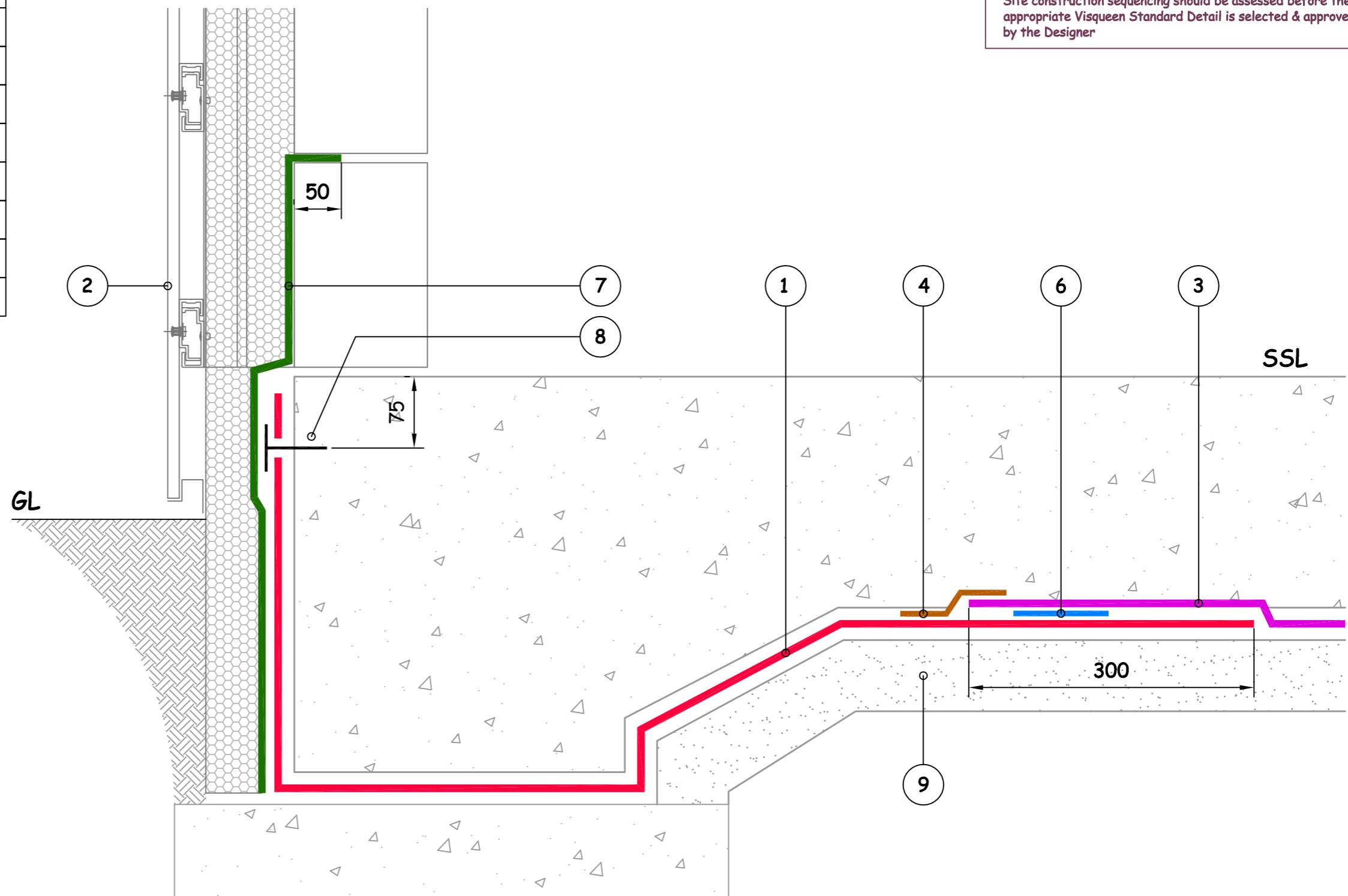


Key to Materials :-	
1	Visqueen Pre Applied Membrane
2	Rain screen cladding by specialist
3	Visqueen Ultimate VOC BLOK
4	Visqueen 150mmx10m GR Lap Tape
5	-
6	Visqueen 100mmx15m GX Jointing Tape
7	Visqueen GR SAM on HP Tanking Primer
8	Visqueen Retaining Discs @ 400mm crs
9	Smooth blinding layer

**Detail Issued For Guidance Only,
Designer's Approval Required**

Site construction sequencing should be assessed before the appropriate Visqueen Standard Detail is selected & approved by the Designer



Typical Slab Edge Combi-Detail : RAIN SCREEN

NB ; DO NOT SCALE - USE FIGURED DIMENSIONS ONLY.



Visqueen Building Products
 Contact Technical Support :
 t : 0333 202 6800
 f : 0333 202 6886
 e : enquiries@visqueenbuilding.co.uk
 www.visqueenbuilding.co.uk

Project: Standard Detail : Visqueen Ultimate VOC BLOK

© COPYRIGHT RESERVED.

VOC-07	Ground Bearing Slab	Ultimate VOC BLOK	-	VOC & Methane
--------	---------------------	-------------------	---	---------------

In order to develop a robust design for protecting the structure against contaminants and harmful ground gases, a risk assessment must be carried out in line with the guidance given in CIRIA C748 and BS 8485:2015