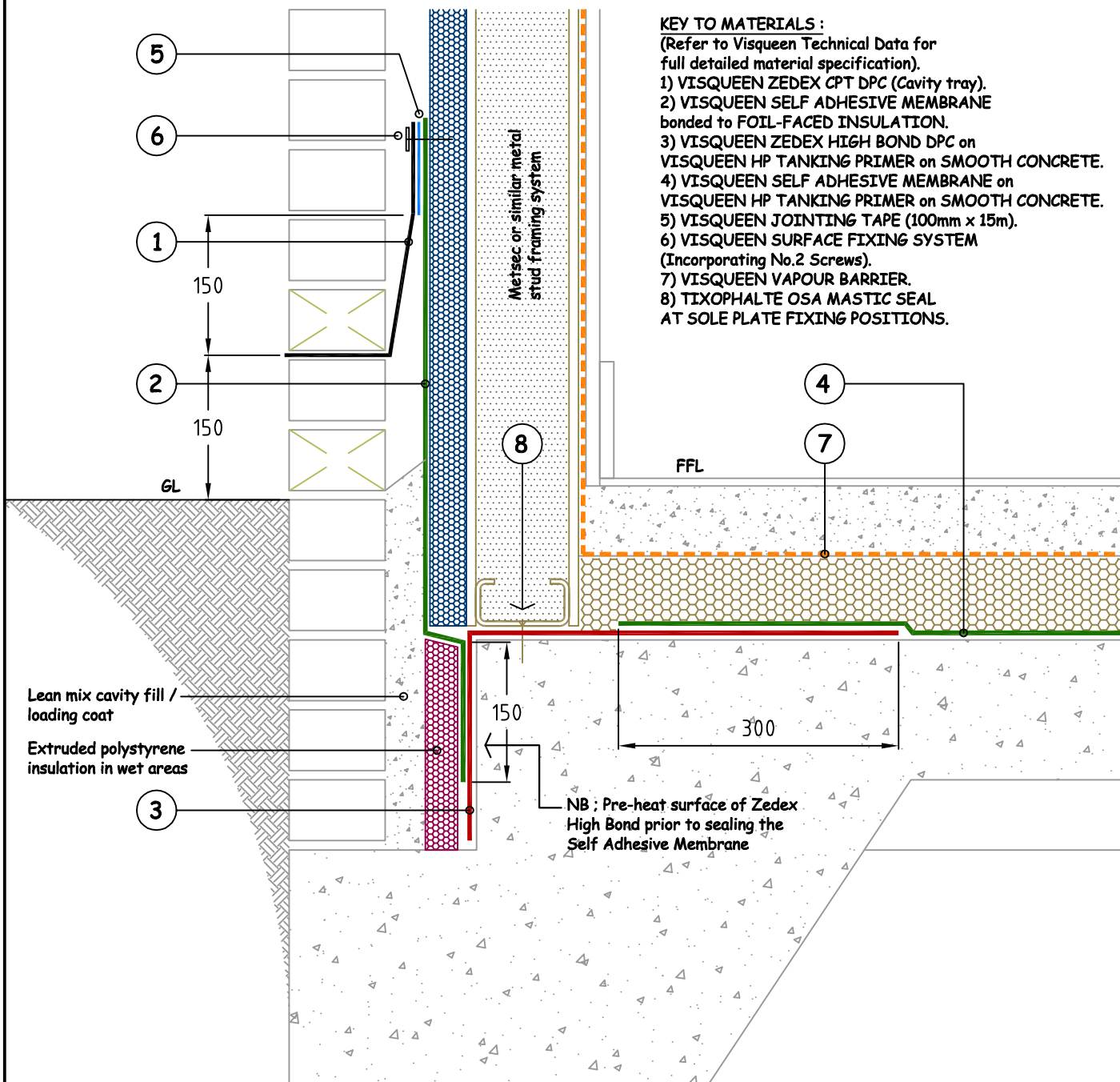


Site construction sequencing should be assessed before the appropriate Visqueen Standard Detail is selected & approved by the Designer

Detail Issued For Guidance Only,
Designer's Approval Required



NB; DO NOT SCALE - USE FIGURED DIMENSIONS ONLY.



Visqueen Building Products
Contact Technical Support :
t : 0333 202 6800
f : 0333 202 6886
e : enquiries@visqueenbuilding.co.uk
www.visqueenbuilding.co.uk

Project: Standard Detail : Typical Perimeter Detail / Metsec Construction.

Drawing No.- SW-34.

Date.- 02/15.

Scale.- NTS.

© COPYRIGHT RESERVED.