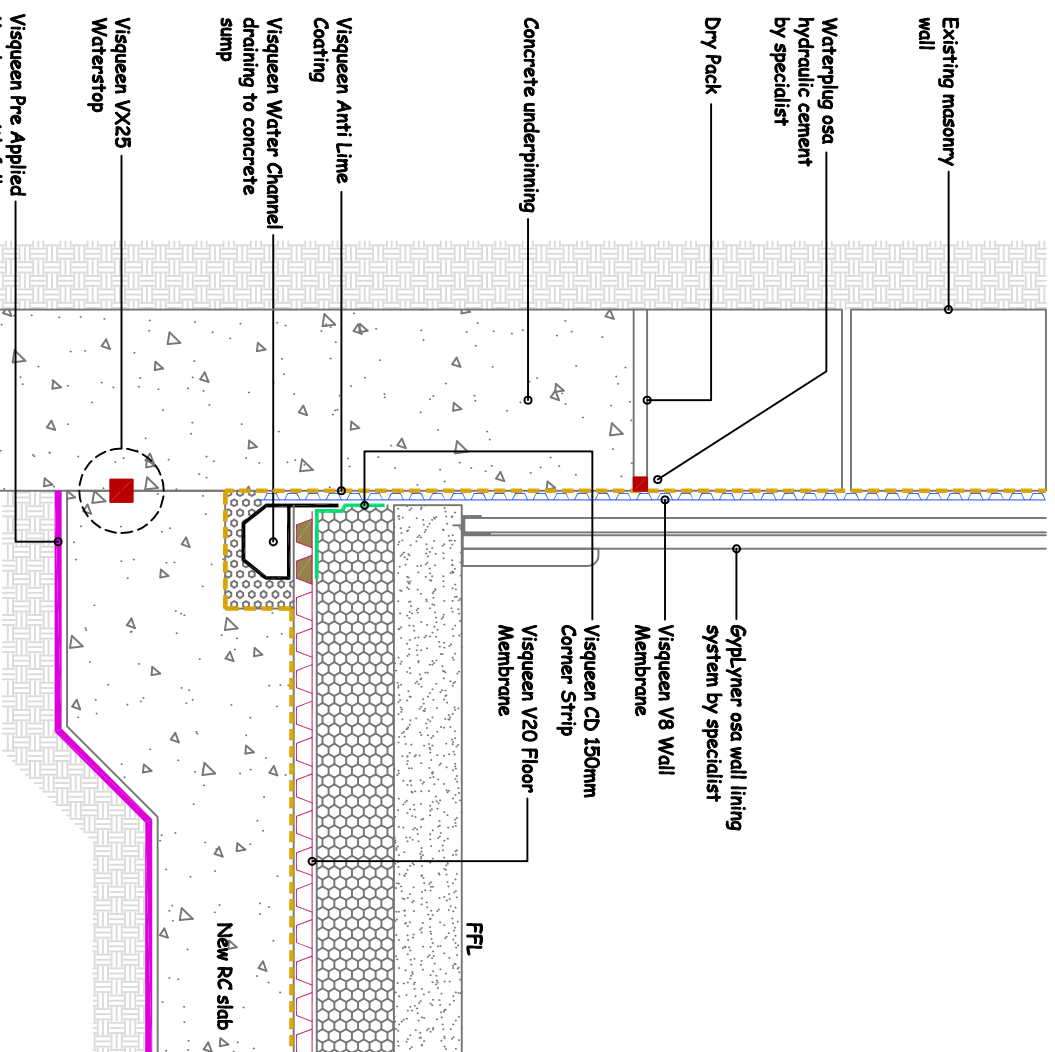


**Detail Issued For Guidance Only,
Designer's Approval Required**

Site construction sequencing should be assessed before the appropriate Visqueen Standard Detail is selected & approved by the Designer

**All cut-outs in concrete slabs to
Structural Engineer's design**

**Visqueen Water Channel to be surrounded
in 20mm rounded washed stone**



TYPICAL UNDERPINNING DETAIL

DETAIL TYPE C

NB : DO NOT SCALE - USE FIGURED DIMENSIONS ONLY.



Project: Standard Detail : Visqueen Cavity Drain Membrane System.

| | | | | |
|----------|---------------------|--------------|-----|---------------|
| RE-CD-04 | Ground Bearing Raft | Cavity Drain | N/A | Refurbishment |
|----------|---------------------|--------------|-----|---------------|

Visqueen Building Products
 Contact Technical Support :
 t : 0333 202 6800
 f : 0333 202 6886
 e : enquiries@visqueenbuilding.co.uk
 www.visqueenbuilding.co.uk

© COPYRIGHT
RESERVED.

WATCH POINTS :-
 1) Ensure V20 Floor Membrane "domes" are filled as necessary to transmit floor loading.
 2) Use mortar infill at the edge of the V20 Floor Membrane to provide a flush surface for bonding the CD 150mm Corner Strip.