

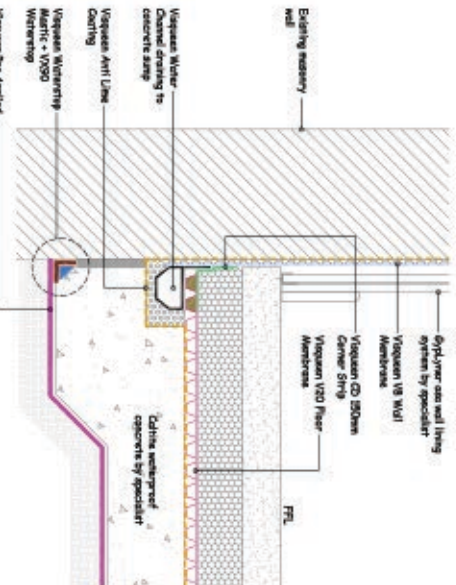
Drawn To meet For Evidence Only.

Designer's Approval Required.

For our concrete retaining product to be used without the approval of a registered structural engineer is a breach of approved building regulations.

All cast-in-situ concrete slabs to Structural Engineer's design

Vegacon Water Channel to be surrounded in 50mm rendered washed gravel



DETAIL TYPE A, B & C

TYPICAL BELOW GROUND WALL/FLOOR DETAIL : EXISTING MASONRY WALL (WATERPROOF CONCRETE SLAB)

NB : DO NOT SCALE - USE DIMENSIONS INDICATED ONLY.

VISQUEEN

CAVITY DRAIN MEMBRANE SYSTEM

Project: Standard Detail : Vegacon Cavity Drain Membrane System.

RE-CD-01 Ground bearing slab

Cavity Drain

N/A

Refurbishment

Vegacon Building Products
Contact Technical Support:
+44 (0)131 222 4800
+44 (0)131 222 4800
+44 (0)131 222 4800
www.visqueen.co.uk

© VISQUEEN

2022

WATCH POINTS :-

- 1) Ensure V20 Fibre Membrane "dimple" are filled as necessary to transmit floor loading.
- 2) Use mortar infill on the edge of the V20 Fibre Membrane to provide a flush surface for bonding the CD 150mm Corner Strip.