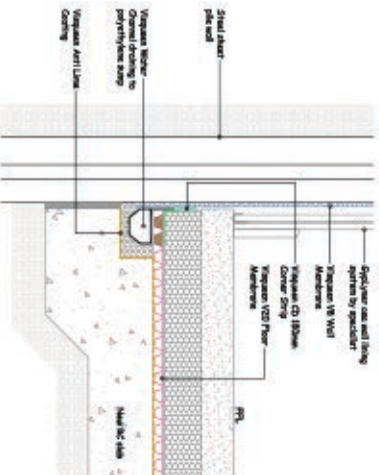


Vaquean Water Channel to be surrounded by 20mm rounded washed natural stone



TYPICAL SHEET PILE DETAIL

DETAIL TYPE B & C

NB: DO NOT SCALE - USE DIMENSIONS ONLY.

VISQUEEN

**CAVITY DRAIN
MEMBRANE SYSTEM**

Vaquean Building Products
Direct to your Supplier!
Tel: 0121 302 4488
Fax: 0121 302 4488
www.visqueenbuilding.co.uk

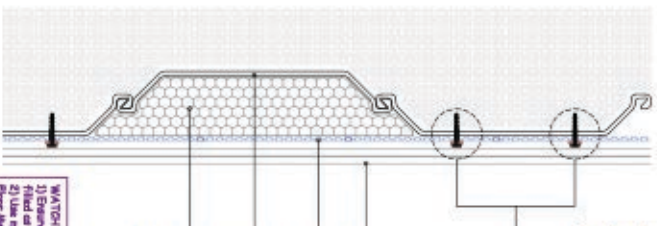
Project: Standard Detail : Vaquean Cavity Drain Membrane System.

NB-CD-13 Pk

Cavity Drain

N/A

New Build Cavity Drain



PLAN

Detail Issued For Guidance Only.
Designer's Approval Required.
No contractor requiring detail to assist with the design. Vaquean require detail to be checked & approved by the Designer.
All call-outs in concrete shall be Structural Engineer's design

WATCH POINTS :-
1) Ensure V20 Floor Membrane 'sealer' are filled as necessary to prevent floor flooding.
2) Use mortar infill at the edge of the V20 Floor Membrane to provide a flush surface for bonding the CD 150mm Corner Strip.

Proprietary fixing anchors
Proprietary cast in situ opening by specialist
Vaquean V8 Wall Membrane
Steel sheet pile with welded cleats. Refer to Structural Engineer's design
Proprietary EP4 insulation will be shown