

Key to Materials :-	
1	Visqueen Zedex CPT DPC
2	Visqueen GX DPC
3	Visqueen Ultimate HC BLOK
4	Visqueen 150mmx10m GR Lap Tape
5	-
6	Visqueen 100mmx15m GX Jointing Tape
7	Visqueen Vapour Barrier
8	Rigid polystyrene insulation

**IMPORTANT NOTE : ALL CAVITY WORK ABOVE DPC MUST BE KEPT COMPLETELY CLEAR OF ANY MORTAR DROPPINGS BY USE OF A CAVITY DRIP BATTEN, FULL-FILL INSULATION OR REGULAR CAREFUL CLEANING OF CAVITIES, AVOIDING DAMAGE TO THE DPC**

**Detail Issued For Guidance Only,  
Designer's Approval Required**

Site construction sequencing should be assessed before the appropriate Visqueen Standard Detail is selected & approved by the Designer

## Typical Internal Cavity Wall Detail

NB ; DO NOT SCALE - USE FIGURED DIMENSIONS ONLY.

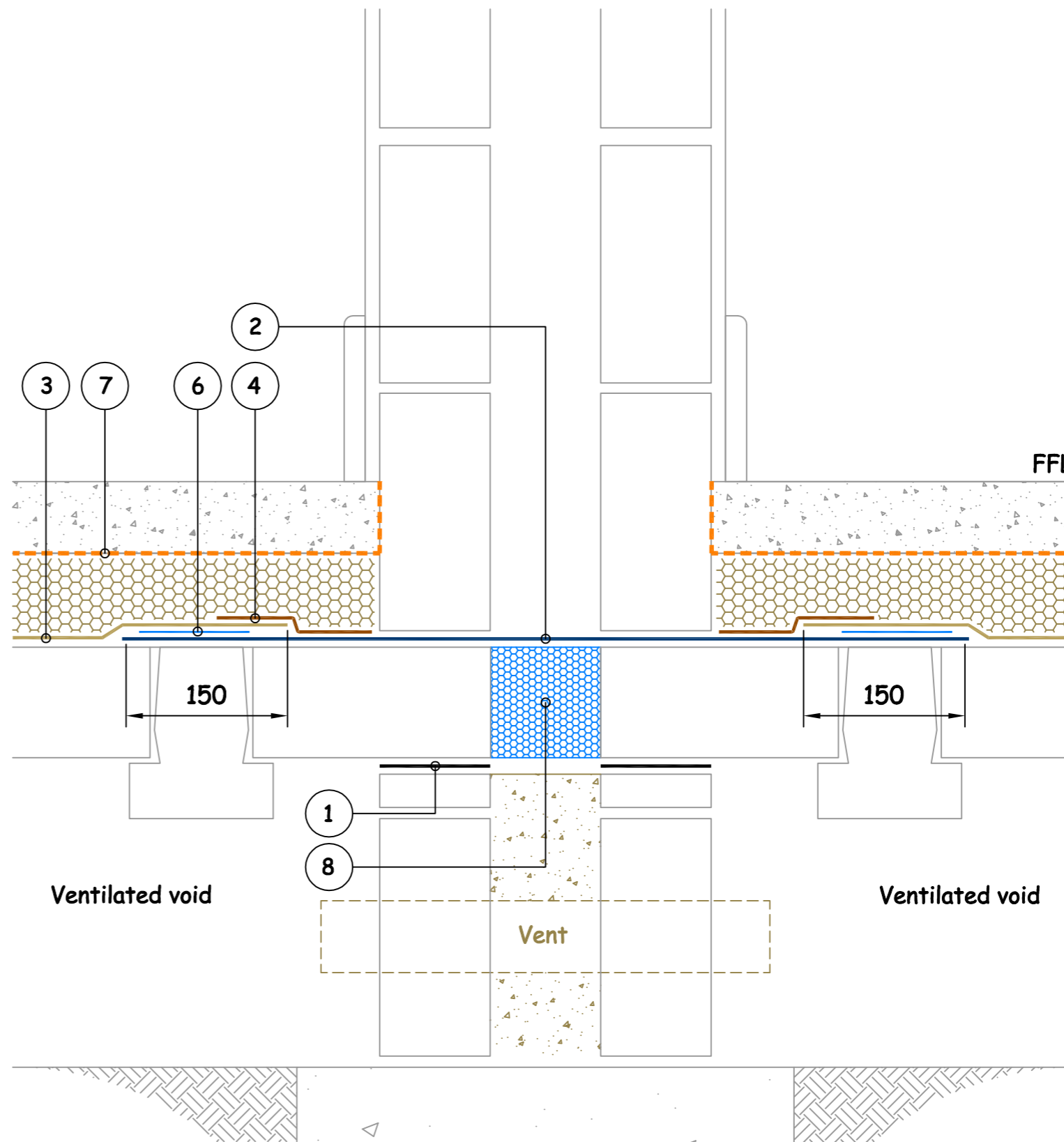


Visqueen Building Products  
 Contact Technical Support :  
 t : 0333 202 6800  
 f : 0333 202 6886  
 e : enquiries@visqueenbuilding.co.uk  
 www.visqueenbuilding.co.uk

Project: Standard Detail : Visqueen Ultimate HC BLOK

© COPYRIGHT RESERVED.

HC-13	Suspended Slab	Ultimate HC BLOK	-	HC
-------	----------------	------------------	---	----



**In order to develop a robust design for protecting the structure against contaminants and harmful ground gases, a risk assessment must be carried out in line with the guidance given in CIRIA C748 and BS 8485:2015**