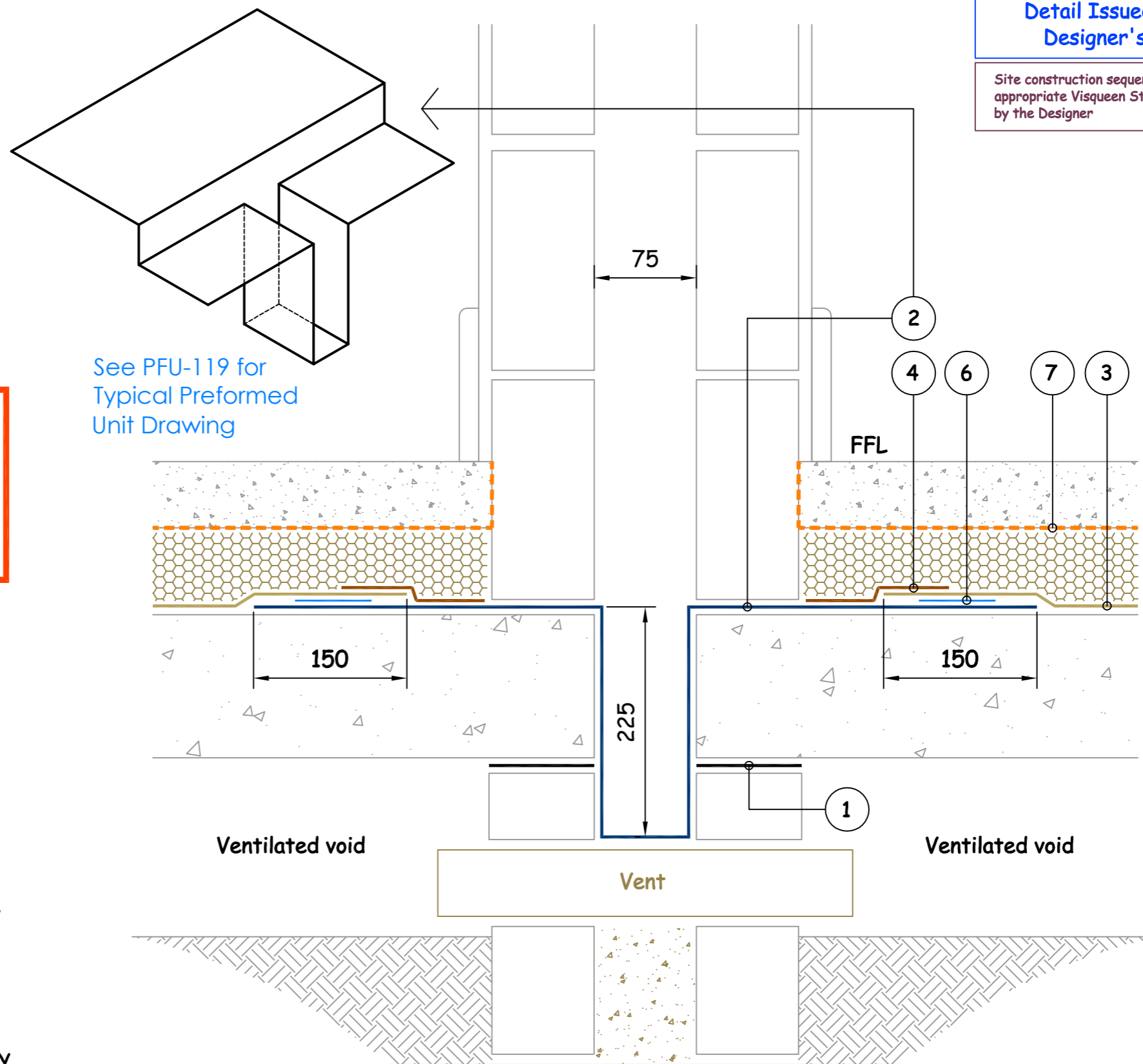


Key to Materials :-	
1	Visqueen Zedex CPT DPC
2	Visqueen GX DPC
3	Visqueen Ultimate HC BLOK
4	Visqueen 150mmx10m GR Lap Tape
5	-
6	Visqueen 100mmx15m GX Jointing Tape
7	Visqueen Vapour Barrier

IMPORTANT NOTE : ALL CAVITY WORK ABOVE DPC MUST BE KEPT COMPLETELY CLEAR OF ANY MORTAR DROPPINGS BY USE OF A CAVITY DRIP BATTEN, FULL-FILL INSULATION OR REGULAR CAREFUL CLEANING OF CAVITIES, AVOIDING DAMAGE TO THE DPC



Detail Issued For Guidance Only, Designer's Approval Required

Site construction sequencing should be assessed before the appropriate Visqueen Standard Detail is selected & approved by the Designer

See PFU-119 for Typical Preformed Unit Drawing

Typical Internal Cavity Wall Robust Detail

NB ; DO NOT SCALE - USE FIGURED DIMENSIONS ONLY.



Visqueen Building Products
 Contact Technical Support :
 t : 0333 202 6800
 f : 0333 202 6886
 e : enquiries@visqueenbuilding.co.uk
 www.visqueenbuilding.co.uk

Project: Standard Detail : Visqueen Ultimate HC BLOK

© COPYRIGHT RESERVED.

HC-11	Suspended Slab	Ultimate HC BLOK	-	HC
-------	----------------	------------------	---	----

In order to develop a robust design for protecting the structure against contaminants and harmful ground gases, a risk assessment must be carried out in line with the guidance given in CIRIA C748 and BS 8485:2015