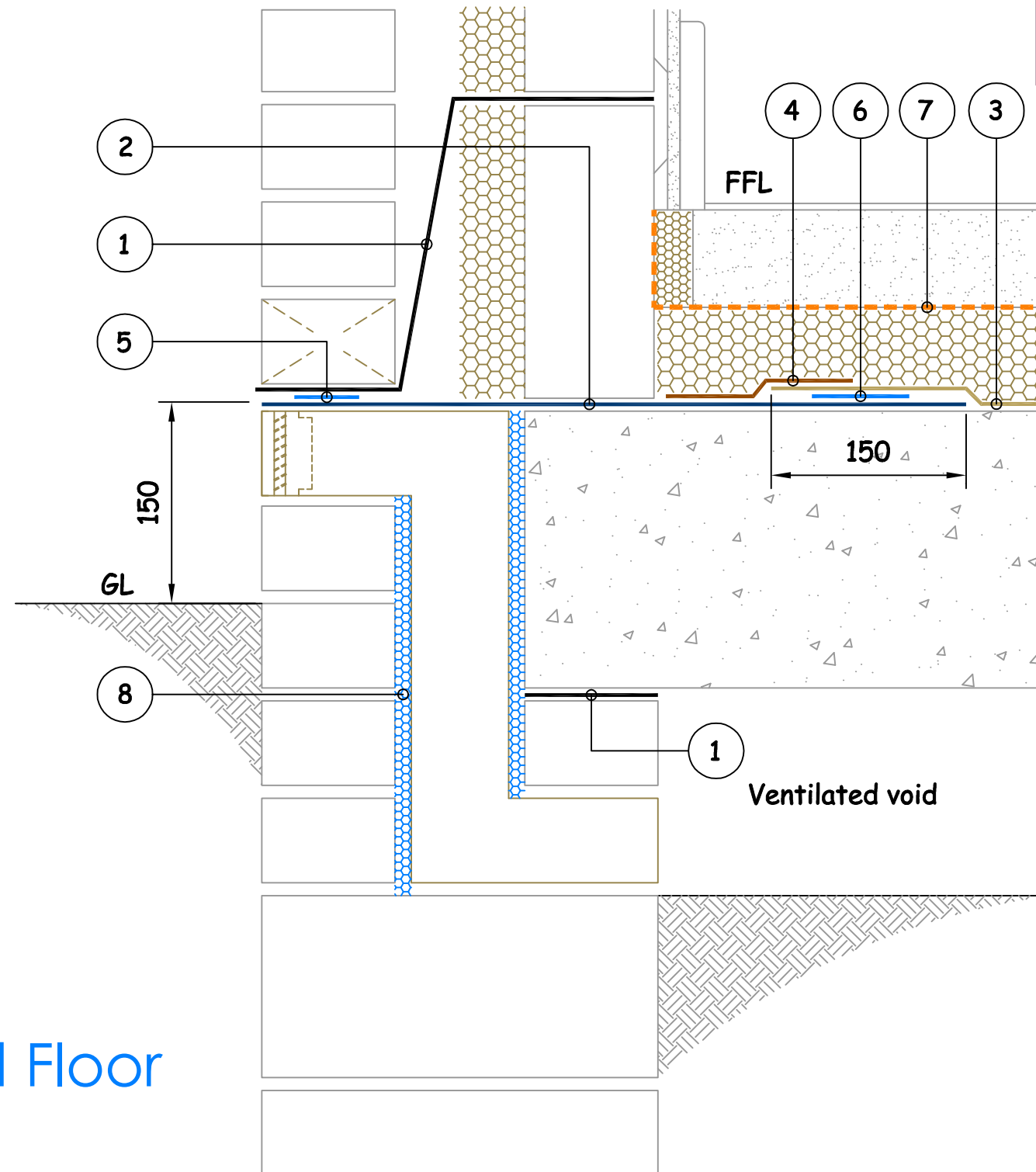


Key to Materials :-	
1	Visqueen Zedex CPT DPC
2	Visqueen GX DPC
3	Visqueen Ultimate HC BLOK
4	Visqueen 150mmx10m GR Lap Tape
5	Visqueen 50mmx10m Jointing Tape
6	Visqueen 100mmx15m GX Jointing Tape
7	Visqueen Vapour Barrier
8	Rigid polystyrene insulation

**Detail Issued For Guidance Only,
Designer's Approval Required**

Site construction sequencing should be assessed before the appropriate Visqueen Standard Detail is selected & approved by the Designer



Typical Edge Detail Suspended Slab - Raised Floor

NB ; DO NOT SCALE - USE FIGURED DIMENSIONS ONLY.



Visqueen Building Products
 Contact Technical Support :
 t : 0333 202 6800
 f : 0333 202 6886
 e : enquiries@visqueenbuilding.co.uk
 www.visqueenbuilding.co.uk

Project: Standard Detail : Visqueen Ultimate HC BLOK

© COPYRIGHT RESERVED.

HC-04	Suspended Slab	Ultimate HC BLOK	-	HC
-------	----------------	------------------	---	----

In order to develop a robust design for protecting the structure against contaminants and harmful ground gases, a risk assessment must be carried out in line with the guidance given in CIRIA C748 and BS 8485:2015