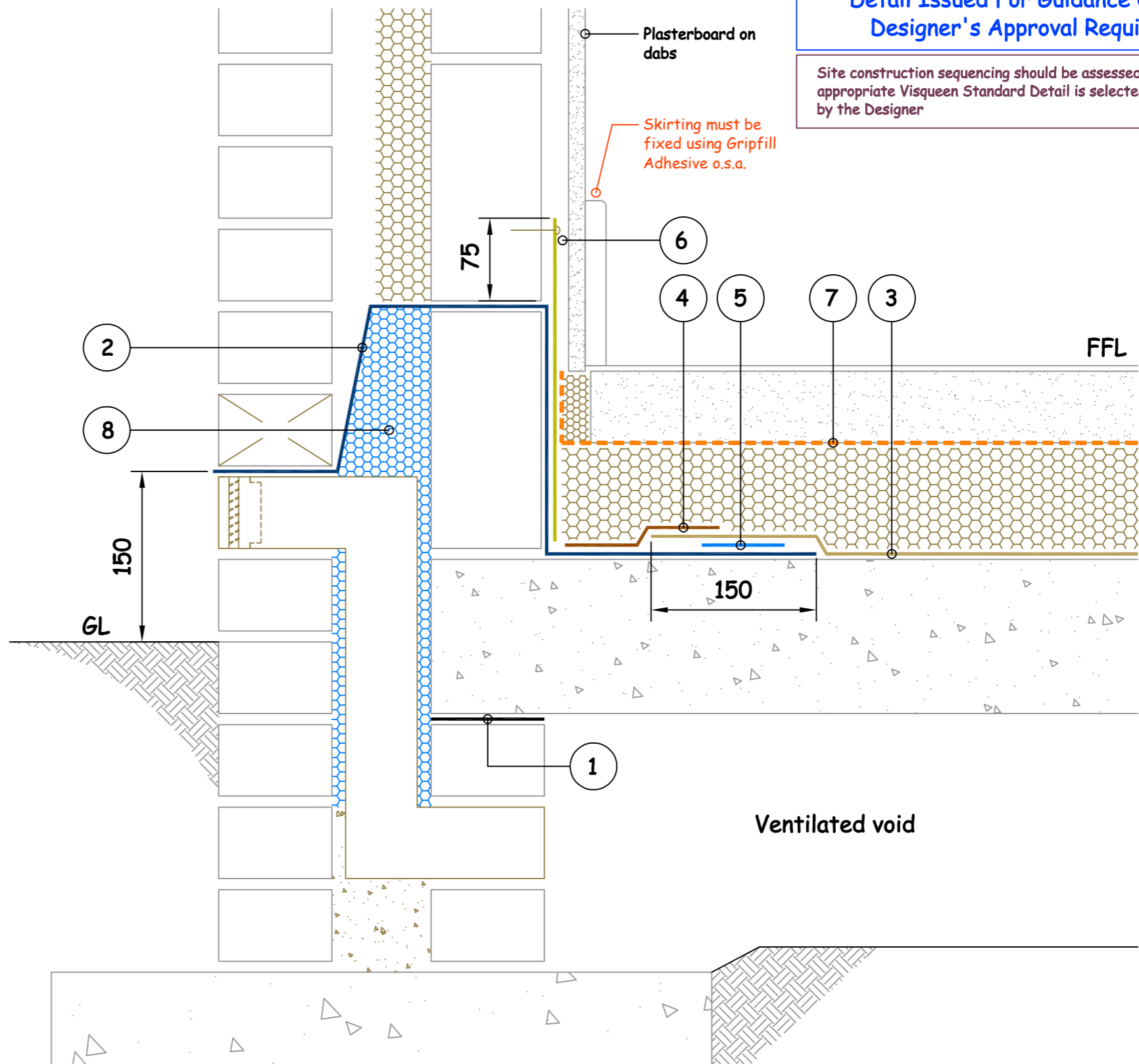


Key to Materials :-	
1	Visqueen Zedex CPT DPC
2	Visqueen GX DPC
3	Visqueen Ultimate HC BLOK
4	Visqueen 150mmx10m GR Lap Tape
5	Visqueen 100mmx15m Jointing Tape
6	Visqueen 3mm Protection Board
7	Visqueen Vapour Barrier
8	Rigid polystyrene insulation

IMPORTANT NOTE : PREFORMED CORNER CLOAKS, STOP ENDS & THRESHOLD UNITS MUST BE USED TO ENSURE THE INTEGRITY OF THE DETAIL IS MAINTAINED



Typical Edge Detail Suspended Slab - Option 3

NB ; DO NOT SCALE - USE FIGURED DIMENSIONS ONLY.



**Detail Issued For Guidance Only,
Designer's Approval Required**

Site construction sequencing should be assessed before the appropriate Visqueen Standard Detail is selected & approved by the Designer

 		<p>Visqueen Building Products Contact Technical Support : t : 0333 202 6800 f : 0333 202 6886 e : enquiries@visqueenbuilding.co.uk www.visqueenbuilding.co.uk</p>		
<p>Project: Standard Detail : Visqueen Ultimate HC BLOK</p>				
HC-03	Suspended Slab	Ultimate HC BLOK	-	HC

In order to develop a robust design for protecting the structure against contaminants and harmful ground gases, a risk assessment must be carried out in line with the guidance given in CIRIA C748 and BS 8485:2015

© COPYRIGHT RESERVED.