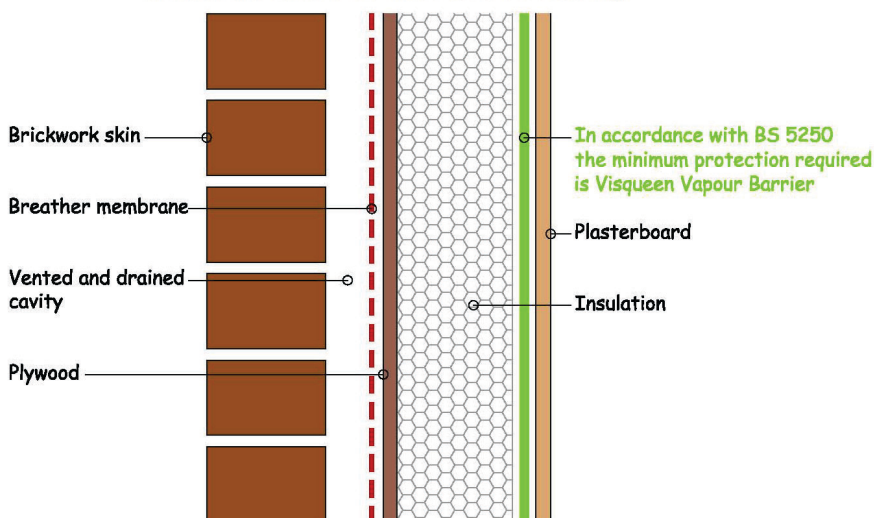


# Vapour Control Layers Quick Guide

	VISQUEEN VAPOUR CHECK	VISQUEEN VAPOUR BARRIER	VISQUEEN HP VAPOUR BARRIER	VISQUEEN FB VAPOUR BARRIER
Condensation Risk Level	Low	Medium	High	High
BS5250 Conditions	Class 1	Class 2 & 3	Class 4 & 5	Class 4 & 5
Application Method	Loose Laid	Loose Laid	Loose Laid	Self Adhesive
Roll Dimensions (m)	2.45x50 or 4x50 Multi-fold roll	2x50 Single wound roll	2x25 or 2x50 Single wound roll	1x20 Single wound roll
Water Vapour Min Resistance (MNs/g)	260	530	1100	2000
Building Types	Factories Warehouses Industrial Units Storage Areas	Domestic Dwellings Apartment Blocks Offices Schools	Textile Factories Paper Mills Swimming Pools Laundries Communal Shower Blocks Canteens Sports Halls Wet Industrial Processes	Textile Factories Paper Mills Swimming Pools Laundries Communal Shower Blocks Canteens Sports Halls Wet Industrial Processes

## Typical House Extension

Timber framed wall with brick cladding



As per the above comparison table and in accordance with BS 5250:2002, in a typical house extension - such as a kitchen or bathroom extension - the minimum product required is Visqueen Vapour Barrier.

In order to ensure a vapour tight seal, all laps should be securely taped using Visqueen Vapour Tape or Vapour Edge Tape. For further installation and jointing details please refer to the Visqueen website.

### Technical support for our stockists

We offer a proven, reliable range backed by a technical support service that goes unmatched in the market. If you have any questions about our VCL range, stockist prices, support materials etc, please don't hesitate to contact us.